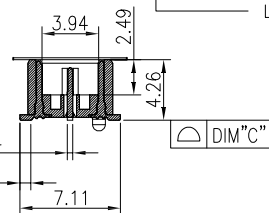
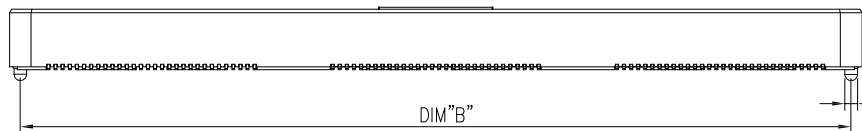


NOTES:

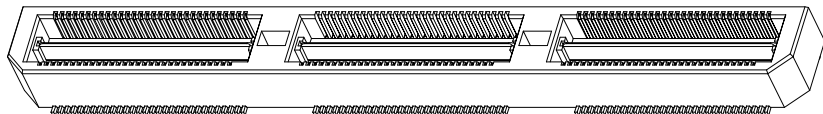
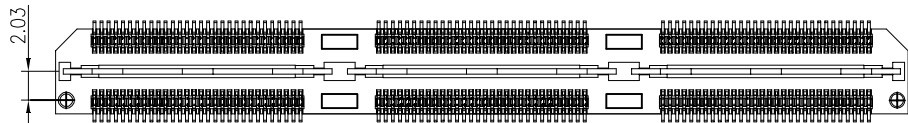
- 1.HOUSING: LCP HIGH-TEMP THERMOPLASTIC UL94V-0 COLOR:BLACK
- 2.TERMINAL/GROUND PLANE:PHOSPHOR BRONZE
PLATING:10u" GOLD IN CONTACT AREA, MATTE TIN ON TAIL.
- 3.CODING INFORMATION: LXW242-xxxP-B3R-01

WATER CODE
PACKING: R: CARRIER REEL
MATERIAL: 3:LCP
COLOR: B:BLACK
P:PLUG
PIN
PLATING: G:GOLD FLASH 2:3u" GOLD IN CONTACT AREA, MATTE TIN ON TAIL.
3:5u" GOLD IN CONTACT AREA, MATTE TIN ON TAIL.
4:10u" GOLD IN CONTACT AREA, MATTE TIN ON TAIL.
5:15u" GOLD IN CONTACT AREA, MATTE TIN ON TAIL.
6:30u" GOLD IN CONTACT AREA, MATTE TIN ON TAIL.
0.5 BTB
HIGHLY: 42--4.26H
LXWCONN BTB CONNECTOR SERIES



SECTION A-A

NO. of contacts	Dimensions		
	A.	B.	C.
60	20.00	18.48	0.10
120	40.00	38.48	0.10
180	60.00	58.48	0.20
240	80.00	78.48	0.20
300	100.00	98.48	0.20



CURRENT RATING: 0.5A MAX.
Dielectric withstanding Voltage 500V.
Operating Temperature: - 55 °C to +85°C.

RECOMMENDED PCB PATTERN DIM.
TOLERANCE : ±0.05



REV	DESCRIPTION	SIGNATURE	DATE
1	1.0		

版本 (REV)	A
图例 (KEY)	

LXW 连兴旺电子(深圳)有限公司 connectivity LXWCONN ELECTRONICS(SHENZHEN)CO.,LTD			
制图 (DR):	Lujunhui	品名 (TITLE):	0.5mm DOUBLE ROW BTB PLUG H4.26
审核 (CND):		料号 (PART NO):	LXW242-xxxP-B3R-01
核准 (APPD):		比例 (SCALE):	1:1
		单位 (UNITS):	mm
		张数 (SHEET):	1 OF 1
		图幅 (SIZE):	A4