



引领连接器 板对板 接插件先锋

Leading The Way In Connectors Board-to-board Connector Pioneers

连兴旺电子(深圳)有限公司 Lxwconn Electronics Co.,Ltd.

办公地址: 深圳市宝安区西乡街道宝田二路6号雍华源商务大厦A1509

工厂地址: 东莞市虎门镇新联社区高科一路1号钧益工业园F栋

联系人: 158 9976 9100 朱先生

电话: 86-755-2959 1214

传真: 86-755-2795 1049

邮箱: zhulin@lxwconn.com

网址: www.lxwconn.com

Office Address: A1509, Huayuan Business Building, No. 6, Baotian 2nd Road, Xixiang Street, Baoan District, Shenzhen

Factory Address: Building F, Yiyi Industrial Park, No.1, Gaoke 1st Road, Xinlian Community, Humen Town, Dongguan City

Mob: 158 9976 9100 Mr. Zhu

Tel: +86-755-2959 1214

Fax: +86-755-2795 1049

E-mail: zhulin@lxwconn.com

http: //www.lxwconn.com



高速传输 / 浮动板对板 / 大电流板对板连接器
定制各种非标板对板 / 板对线连接器

High Speed Transmission / Floating Board to Board /
High Current Board to Board Connector
Customized various non-standard board to board /
board to line connectors

2023
version

连兴旺电子(深圳)有限公司
Lxwconn Electronics Co.,Ltd.



COMPANY PROFILE

公司简介)))

连兴旺电子(深圳)有限公司是一家集专业设计研发、生产、销售各种精密连接器、接插件及线束的专业厂商。连兴旺电子(东莞)有限公司,位于广东省东莞市,拥有8000多平方的专业生产基地,员工180余人。产品研发、模具设计制造、冲压注塑成型、自动化组装、实验室等一应俱全。并拥有一支高素质,高科技专业人才和管理人才为主的技术队伍和营销管理团队。能够时刻把握市场脉搏,关注市场动向,掌握最新资讯,开发出让客户满意,消费者认同的新产品。形成了完善的产,供,销一体化体系。客户群覆盖珠三角,内地,港台及东南亚,欧美等地。

产品广泛应用于计算机主机板、液晶显示器、电讯卡、存储器、移动硬盘、读卡器、数码相机、PDA、液晶电视、交换机、汽车防盗器、无人机、手机及各种通讯设备产品上。

连兴旺坚持以“客户至上,品质第一,真诚服务,绿色健康”的经营理念,持续提升品质,降低成本满足客户需要,提升客户产品的竞争力,实现客户价值!连兴旺将始终以稳定的品质,合理的价格,交期的及时,真诚的服务与各界朋友携手共进,共创辉煌!

Lianxingwang Electronics (Shenzhen) Co., Ltd. is a professional manufacturer specializing in the design, development, production, and sales of various precision connectors, connectors, and wiring harnesses. Lianxingwang Electronics (Dongguan) Co., Ltd. is located in Dongguan City, Guangdong Province, with a professional production base of more than 8000 square meters and more than 180 employees. Product research and development, mold design and manufacturing, stamping and injection molding, automated assembly, laboratory, etc. are all available. And has a high-quality, high-tech professionals and management talents based technical team and marketing management team. Be able to constantly grasp the pulse of the market, pay attention to market trends, master the latest information, and develop new products that satisfy customers and consumers. A complete integrated system of production, supply, and marketing has been formed. The customer base covers the Pearl River Delta, the mainland, Hong Kong and Taiwan, Southeast Asia, Europe and the United States, and other places.

The products are widely used in computer motherboards, LCD monitors, telecommunications cards, memories, mobile hard disks, card readers, digital cameras, PDAs, LCD TVs, switches, car anti-theft devices, drones, mobile phones, and various communication equipment products.

Lian Xingwang adheres to the business philosophy of "customer first, quality first, sincere service, green and healthy", continuously improving quality, reducing costs to meet customer needs, enhancing the competitiveness of customer products, and achieving customer value! Lian Xingwang will always work with friends from all walks of life to create brilliance with stable quality, reasonable price, timely delivery, and sincere service!

CORPORATE CULTURE

企业文化)))



01 愿景 / Vision

专注精密连接器和接插件研发制造, 推动中国工业创新发展, 服务全球工业装备;

Focus on the R&D and manufacturing of precision connectors and connectors, promote the innovative development of China's industry, and serve global industrial equipment;

02 理念 / Mission

客户至上, 品质第一, 真诚服务, 绿色健康;

Customer first, quality first, sincere service, green and healthy;

03 价值观 / Values

品牌服务客户, 感恩成就梦想, 耕耘回馈社会;

The brand serves customers, thanks for achieving dreams, cultivates and returns to the society;

CONTENTS 目录

企业篇 Corporate

- 01-02 公司简介 Company Profile
- 03 企业文化 Corporate Culture
- 05-06 冲压注塑车间 Stamping And Injection Workshop
- 07 自动化组装 Automatic Assembly
- 08 产品检测 Product Testing

产品篇 Products

- 09-12 BTB系列 BTB Series
- 13 FPC系列 FPC Series
- 14 大电流 / 电池座系列 High Current / Battery Holder Series
- 15 IDC / DIP系列 IDC / DIP Series
- 16 线束系列 Wire Harness Series
- 17-18 WAFER 系列 WAFER Series
- 19 排针系列 Pin series
- 20 排母系列 Paired mother series
- 21 圆孔排针排母系列 Round hole row pin row female series
- 22 简牛 / 牛角系列 Jane Cow / Cow Horn Series
- 23 TYPE-C / USB 3.0系列 TYPE-C / USB 3.0 Series
- 24 卡座系列 Card Holder Series
- 25 D-SUB系列 D-SUB Series
- 26 HDMI / RJ45系列 HDMI / RJ45 Series
- 27 POGOPIN系列 POGOPIN Series
- 28 弹片 / RF系列 Shrapnel / RF Series



STAMPING AND INJECTION WORKSHOP 冲压注塑车间)))

我们设有冲压车间, 注塑车间, 能独立完成从连接器零件生产到连接器组装与检测全过程, 完整的产业链配合; 同时拥有一批行业经验8年以上的管理人员和资深专业的技术人员, 雄厚的设备保障体系和技术支持体系, 以确保产品的品质和快速交货的需要。

We have stamping workshop and injection workshop, which can independently complete the whole process from connector parts production to connector assembly and testing, and complete the industrial chain cooperation; At the same time, it has a group of managers and senior professional technicians with more than 8 years of industry experience, and a strong equipment guarantee system and technical support system to ensure the quality of products and the need for rapid delivery.



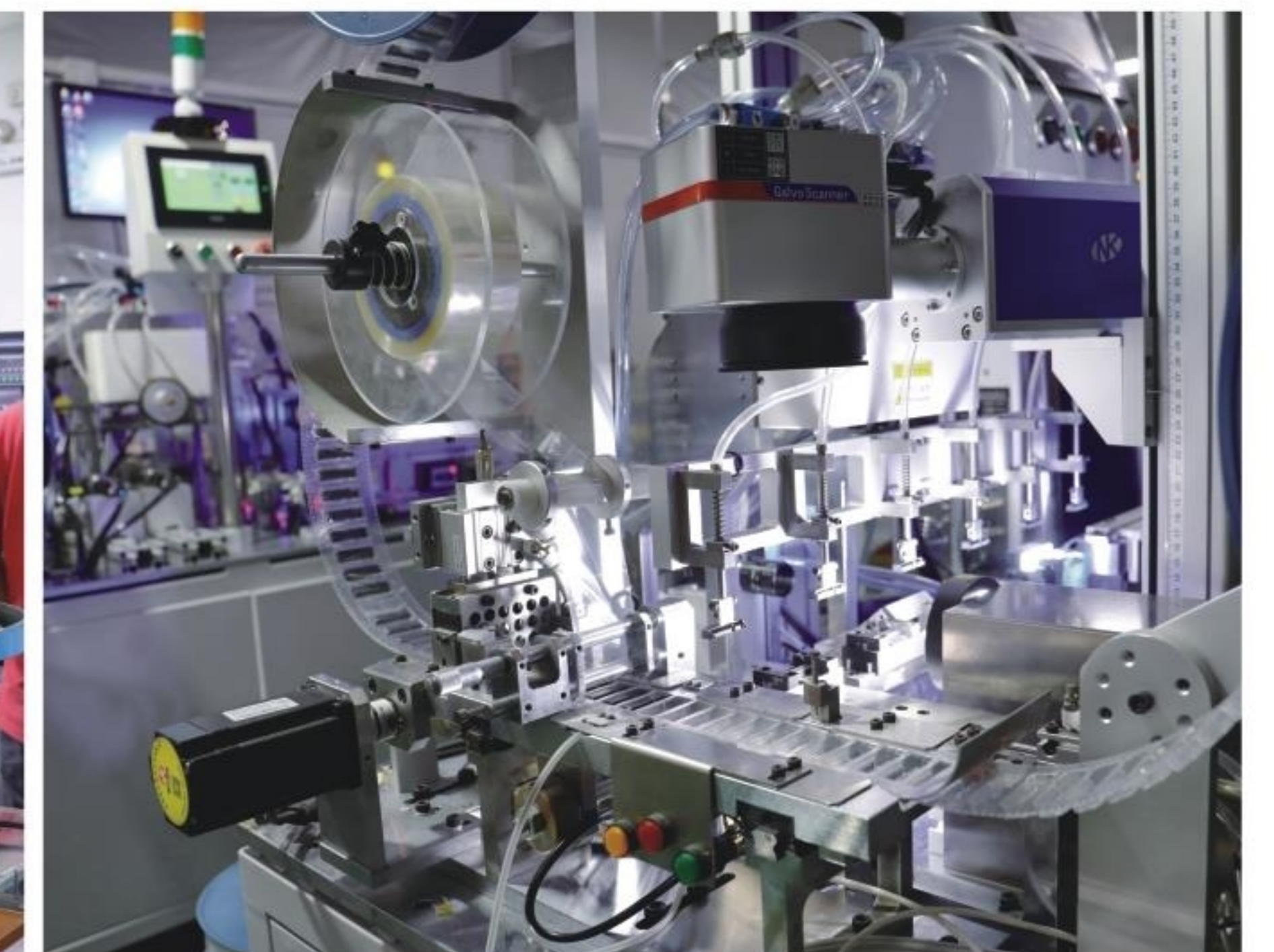
AUTOMATIC ASSEMBLY

自动化组装)))



标准化的组装流程, 确保组装工序的零缺陷, 全自动化组装生产线, 快捷的服务响应, 高品质, 高时效的执行效率。

Standardized assembly process ensures zero defects in the assembly process, fully automated assembly production line, fast service response, high quality and high efficiency of execution.



MOLD PROCESSING CENTER

模具加工中心)))



PRODUCT TESTING

产品检测)))

品质是我们的命脉, 我们坚持让每一件出厂的产品, 都具有最高品质标准, 满足客户的行业应用需求。

Quality is our lifblood. We insist that every product leaving the factory has the highest quality standard to meet the industry application needs of customers.



高速BTB系列



0.5MM H5.0-12 10-160PIN
料号: LB2XX-XXX-BOR03



0.5MM 公座 H5.0, 6.0 100-220PINS
料号: LB223-GXXP-B1R



0.5MM 母座 H5.0, 6.0 100-220PINS
料号: LB236 / LB226-GXXS-B1R



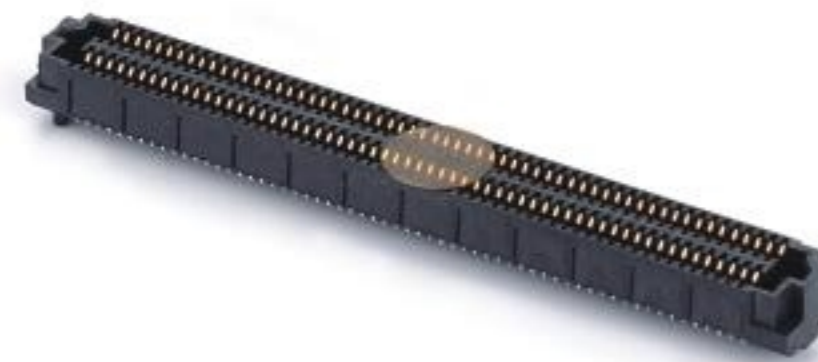
0.5MM H5.0 公座 60/120/180PIN
料号: LB242-XXXP-B3R-01



0.5MM H5.0 母座 60/120/180PIN
料号: LB232-XXS-B3R-01



0.635MM H5.0 公座 4*10-4*100PIN
料号: LB27XX-XXXP-BXR



0.635MM H5.0 母座 4*10-4*100PIN
料号: LB27XX-XXS-BXR



0.8MM 公座 H7.0 20-160PIN
料号: LB901-GXXP-BOR



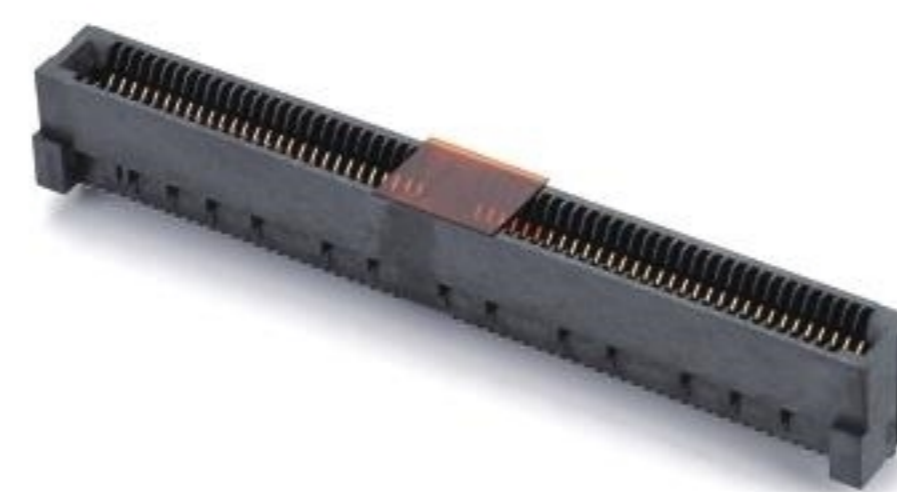
0.8MM 母座 H7.0 20-160PIN
料号: LB901-GXXS-BOR



1.0MM 10-140P
料号: LB1090-GXX-BXR02



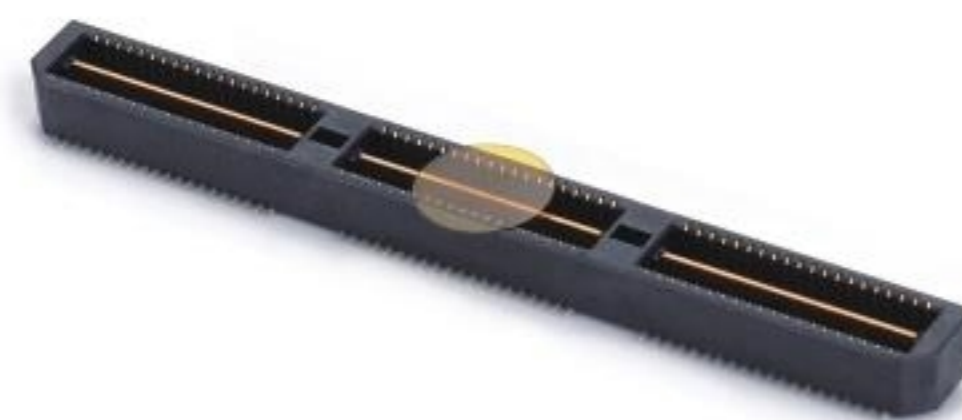
0.8MM 40-200P 4.2 / 7.2 / 15.2 / 24.2H
料号: LXW3XX-XXXP-B3R-01



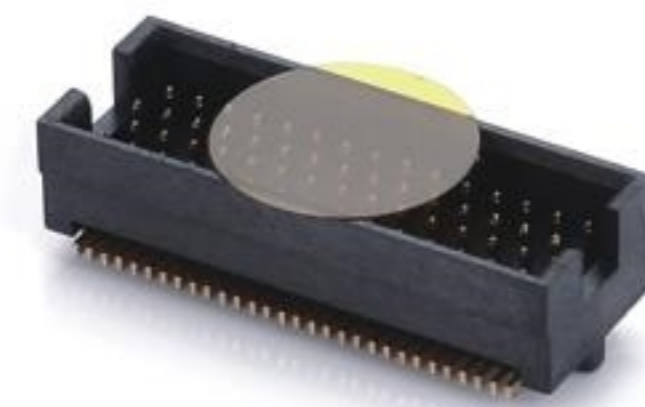
0.8MM 26-200P
料号: LP380-XXX-BOR01



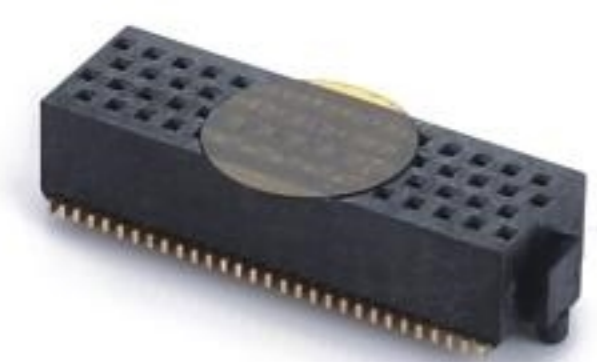
0.8MM H5.0 母座 40/80/120PIN
料号: LXW332-XXS-B3R-01



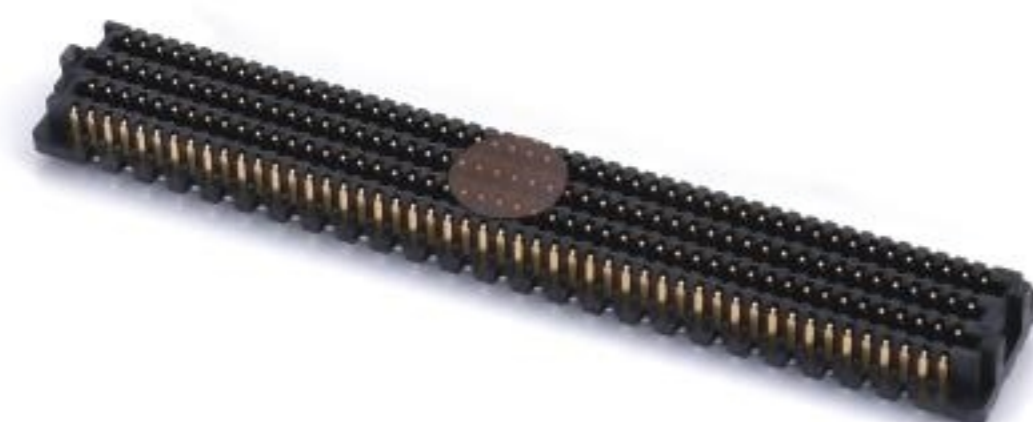
0.8MM H5.0 公座 40/80/120PIN
料号: LXW3XX-XXXP-B3R-01



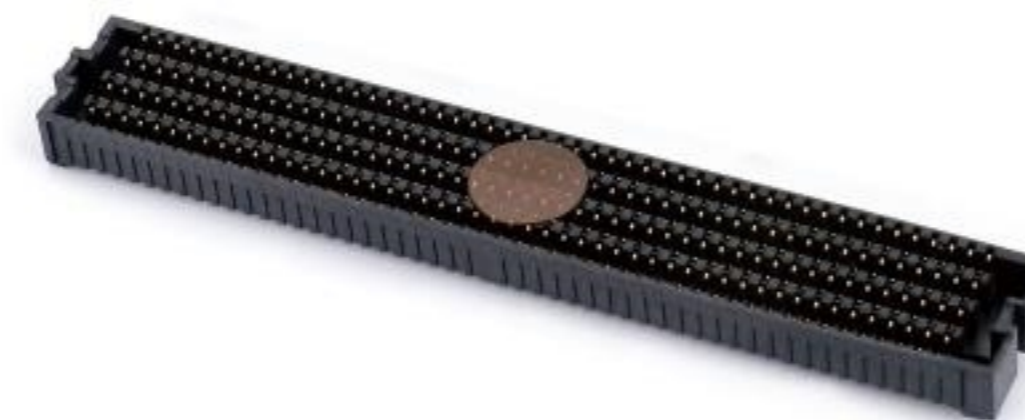
1.27MM H6.35/H8.0/H10.0/
H12公座4*5-4*50PIN
料号: LB9XX-GXXP-B0R



1.27MM H6.35/H8.0/H10.0/
H12母座4*5-4*50PIN
料号: LB946-GXS-BOR



1.27MM 公座 H7.0-11 4/5/6/8/10/12/14排
10/15/19/20/25/30/40/50PIN
料号: LB19XX-XXXP-BXR02



1.27MM 母座 H7.0-11 4/5/6/8/10/12/14排
10/15/19/20/25/30/40/50PIN
料号: LB19XX-XXS-BXR02 (SEAF)

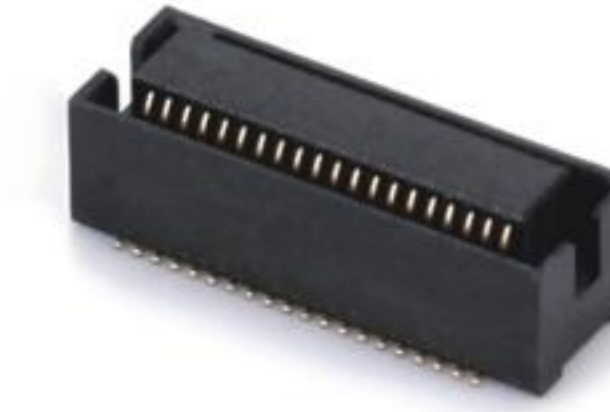
浮动BTB系列



0.5MM H10 公座 20-120 PIN
料号: LB289-GXXP-BOR 仿FX23L



0.5MM H10 母座 20-120 PIN
料号: LB258-GXS-BOR 仿FX23L



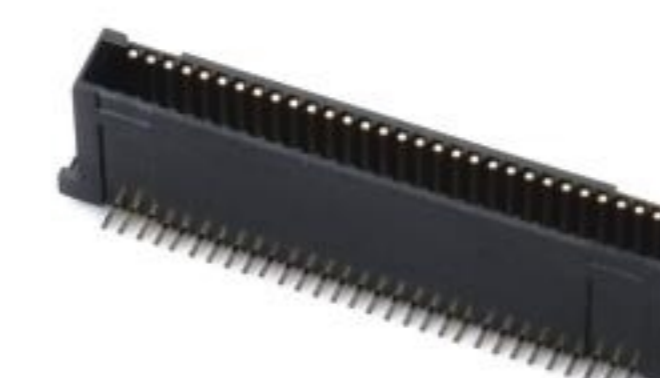
0.5MM 20-100P 5.0H 公座
料号: LB2XX-GXXP-BXR



0.5MM 20-100P 5.0H 母座
料号: LB2XX-GXS-BXR



0.8MM 公座 H5-25 100PIN
料号: LB801-GXXP-BOR



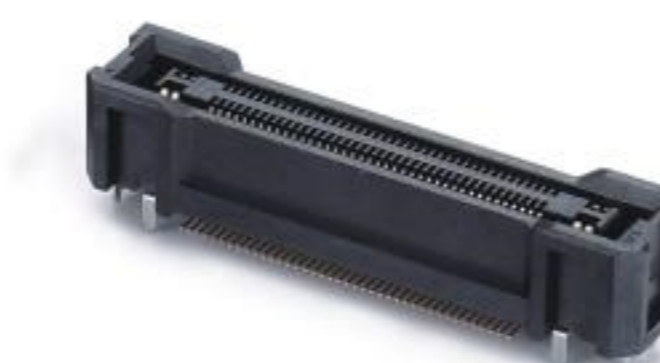
0.8MM 母座 H5-25 100PIN
料号: LB801-GXS-BOR



0.8MM H12.75 公座 30-120PIN
料号: LB3A1-GXXP-BOR01



0.8MM H12.75 母座 30-120PIN
料号: LB361-GXR-BOR01



0.5 H7.1 公座20-120P
料号: LB2XX-GXXP-BOR



0.5 H11.5/16.5 母座20-120P
料号: LB2XX-GXS-BOR



1.0MM H18/H20 公座 20/30/40/50/60 PIN
料号: LB4A5-GXXP-BOR(FX26)



1.0MM H18/H20 母座 20/30/40/50/60 PIN
料号: LB4A1-GXS-BOR(FX26)

大电流BTB系列



0.8MM 间距
母座 LB006-XX-002



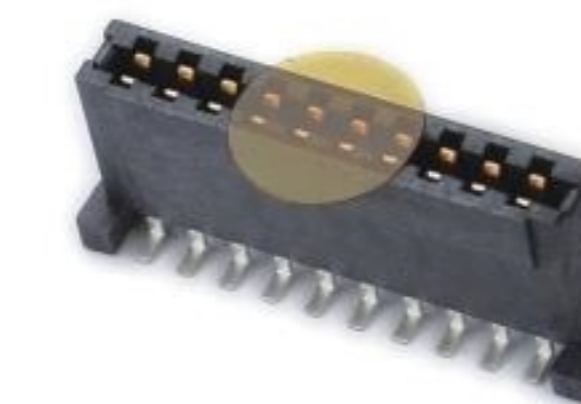
0.8MM 间距
公座 LB106-XX-002



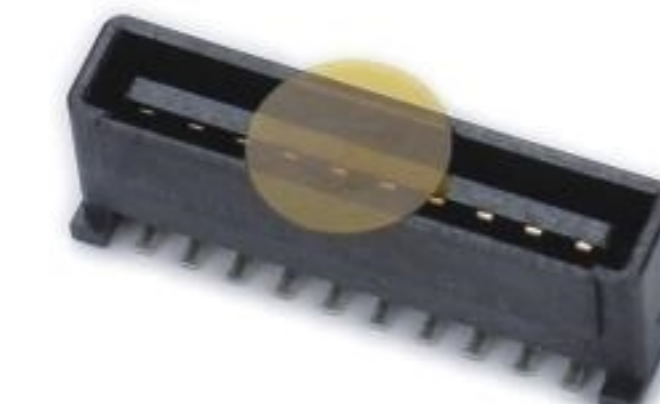
0.8MM 间距
母座 LB005-XX-002



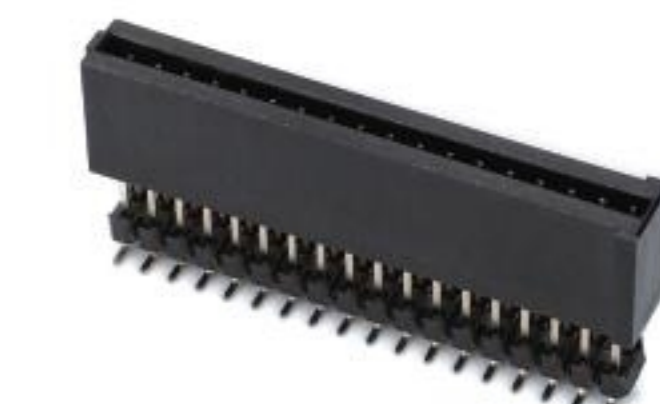
0.8MM 间距
公座 LB105-XX-002



2.0MM 间距
公座 H14.65 20-50PINS



2.0MM 间距
母座 H14.65 20-50PINS



2.54mm 间距
母座 H12-25 10-42PINS



2.54mm 间距
公座 H12 10-42PINS



2.54mm 间距
母座: LB0254-XX-005



2.54mm 间距
公座: LB1254-XX-005

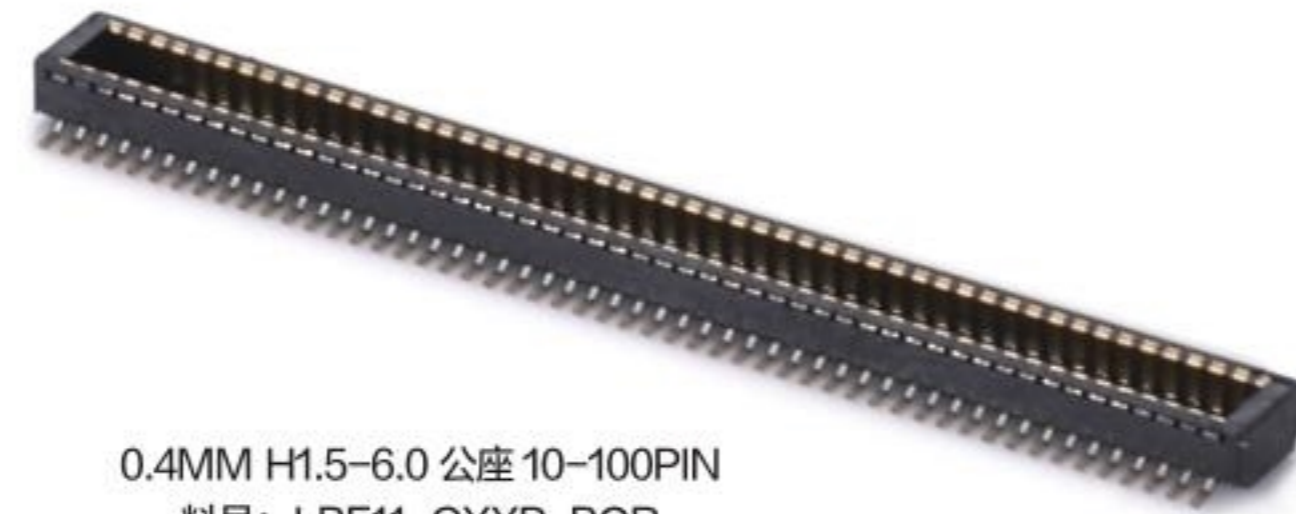
0.4mm间距BTB系列



0.4MM H0.8 公座 10-50PIN
料号: AXE6XX



0.4MM H0.8 母座 10-50PIN
料号: AXE5XX



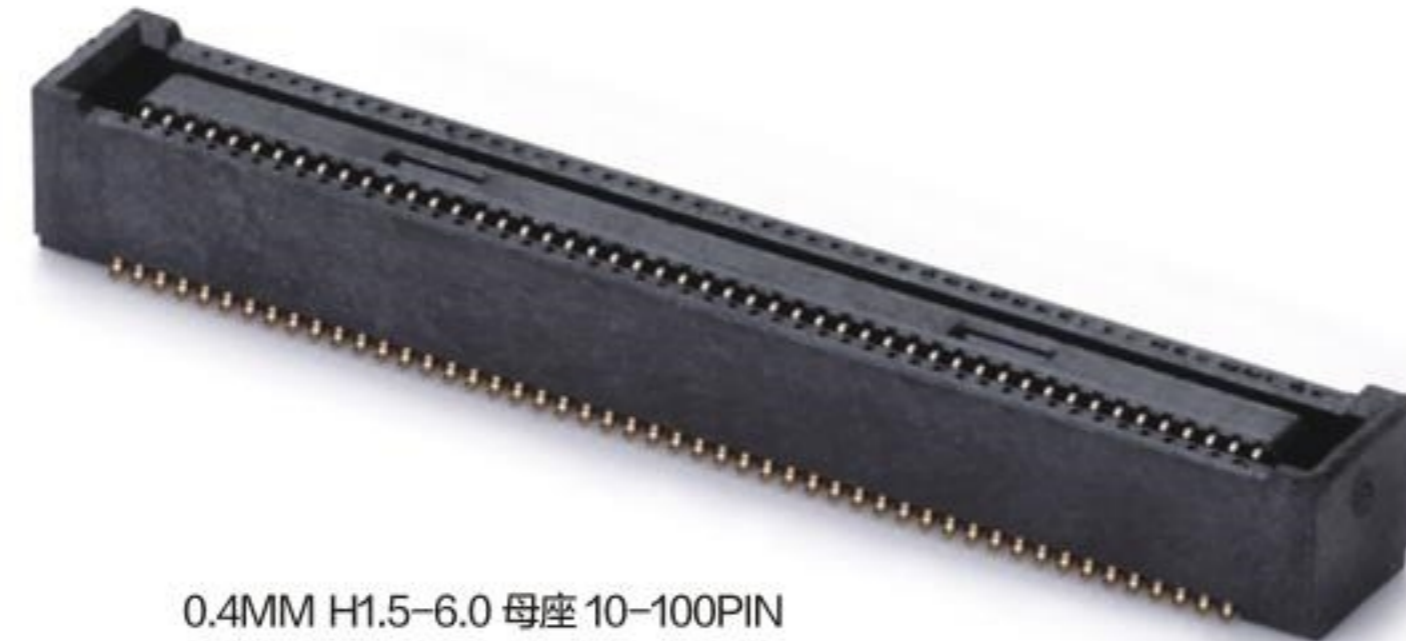
0.4MM H1.5-6.0 公座 10-100PIN
料号: LBF11-GXXP-BOR



0.4MM H1.0 公座 10-60PIN
料号: AXT6XX



0.4MM H1.0 母座 10-60PIN
料号: AXT5XX



0.4MM H1.5-6.0 母座 10-100PIN
料号: LBFXX-GXXS-BOR



0.4MM H1.5 公座 10-70PIN
料号: AXK8XX



0.4MM H1.5 母座 10-70PIN
料号: AXK7XX

常规BTB系列



0.5MM 公座 H3.0/5.0 10-80 PIN
料号: LB2XX-GXXP-B1R



0.5MM 母座 H3.0和H5.0 10-80 PIN
料号: LB2XX-GXXS-B1R



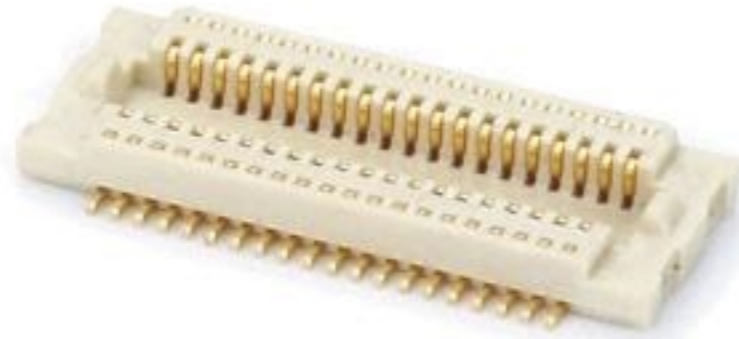
0.5MM 母座 H 5.0 10-80PIN
料号: LB201-GXXS-COR



0.5MM 公座 H 5.0 10-80PIN
料号: LB201-GXXP-COR



0.5MM 公座 H 1.28 10-80 PIN
料号: LB615-GXXP-COR



0.5MM 母座 H1.5/2.0/2.5 10-80 PIN
料号: LB6XX-GXXS-COR



0.8MM 公座 H 5.0 10-80PIN
料号: LB100-GXXP-COR



0.8MM 母座 H 5.0 10-80PIN
料号: LB100-GXXS-COR



0.5MM H:4.0/5.2/5.6/8.0 52PIN
料号: LPB2XX-GXXP-B3R-01



0.5间距 2.27H 母座 20-80PIN
料号: LB4523-XXS-W0R



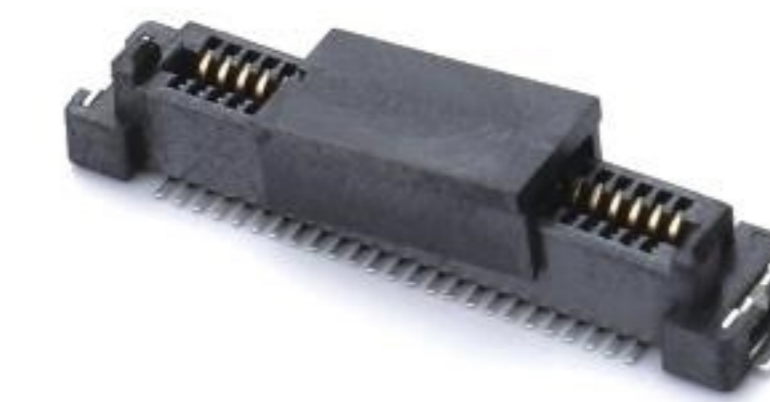
AMP0.8 H5.0 公座 20-140PIN
料号: LB547-GXXP-C0R



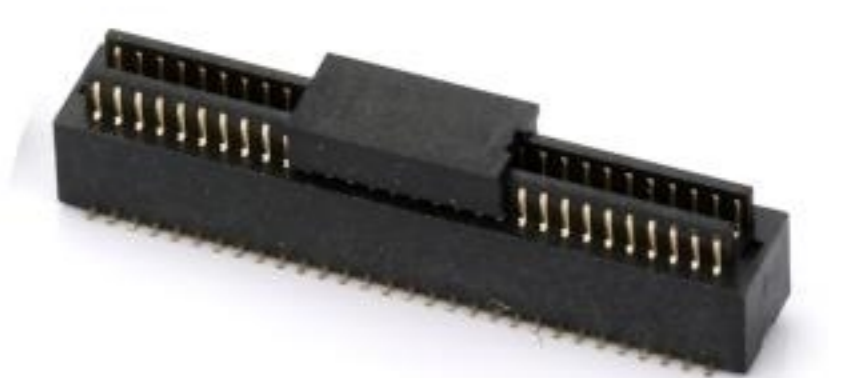
AMP0.8 H5.0 母座 20-140PIN
料号: LB537-GXXS-C0R



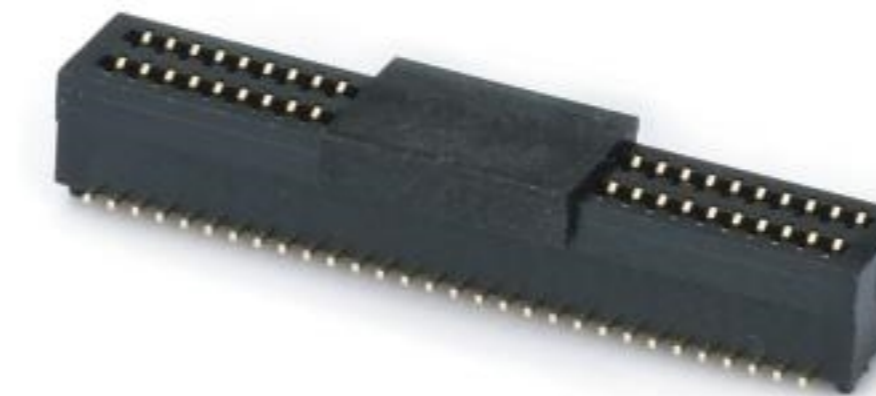
0.8MM 公座 H14.5 20-100PIN
料号: LB6XX-GXXS-COR



0.8MM 母座 H4.0 20-100PIN
料号: LB5XX-GXXP-BOR



0.5MM 公座 H3.0-6.5 8-100PINS
0.8MM 公座 H4.0-6.5 8-100PINS



0.5MM 母座 H3.0-6.5 8-100PINS
0.8MM 母座 H4.0-6.5 8-100PINS



0.8MM 公座 H 6.5 50PINS
料号: BTB3-MXXXAXXXXXMXX1



金手指接线座 2*4P
料号: LB6A8-306S-BOR



0.5MM 母座 H7.5-8.5 10-100PINS
0.8MM 母座 H7.5-8.5 10-100PINS



0.5MM 公座 H7.5-8.5 10-100PINS
0.8MM 公座 H7.5-8.5 10-100PINS



0.5MM H3.0/H3.5 母座 20-120PIN
料号: LB3524-GXXS-W0R



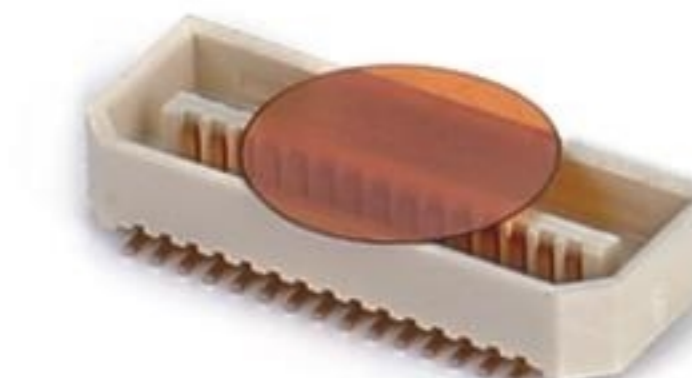
0.5MM H3.0/H3.5 公座 20-120PIN
料号: LB35XX-GXXP-W0R



0.8MM 公座 H 6.6 20-100PINS
料号: LB366-GXXP-BOR



0.8MM 母座 H7.8 20-100PINS
料号: LB378-GXXS-BOR



0.8MM H3.0 公座 12-140PIN
料号: LB327-GXXP-W0R01



0.8MM H3.0 母座 12-140PIN
料号: LB322-GXXS-W0R01



1.0MM 间距 公座 H:9.75 30PIN
料号: LB601-G30P-BOR



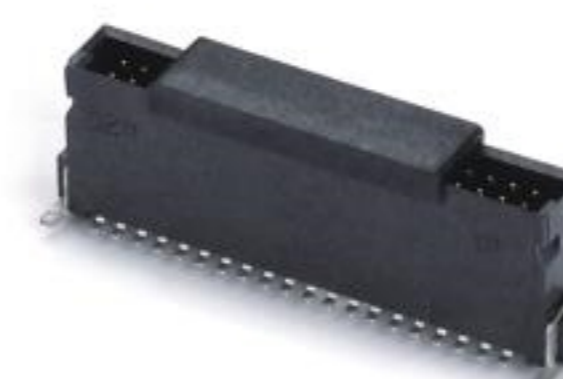
1.0MM 公座 H3.3 9-51PINS
料号: LB735-GXXP-COR



1.0MM 20-100P 5.35 / 10.35H
料号: LB14XX-GXXS-WOR



1.0MM 20-100P 8.35H 公座
料号: LB1483-GXXP-WOR



1.27MM H8-18.6 公座 12-80PIN
料号: LXW1272P-XXSG5-SM-825CR



1.27MM H8-18.6 母座 12-80PIN
料号: LXW1272S-XXSG5-SM-1365CR



2.0MM 间距 母座
H:14.65 20PIN

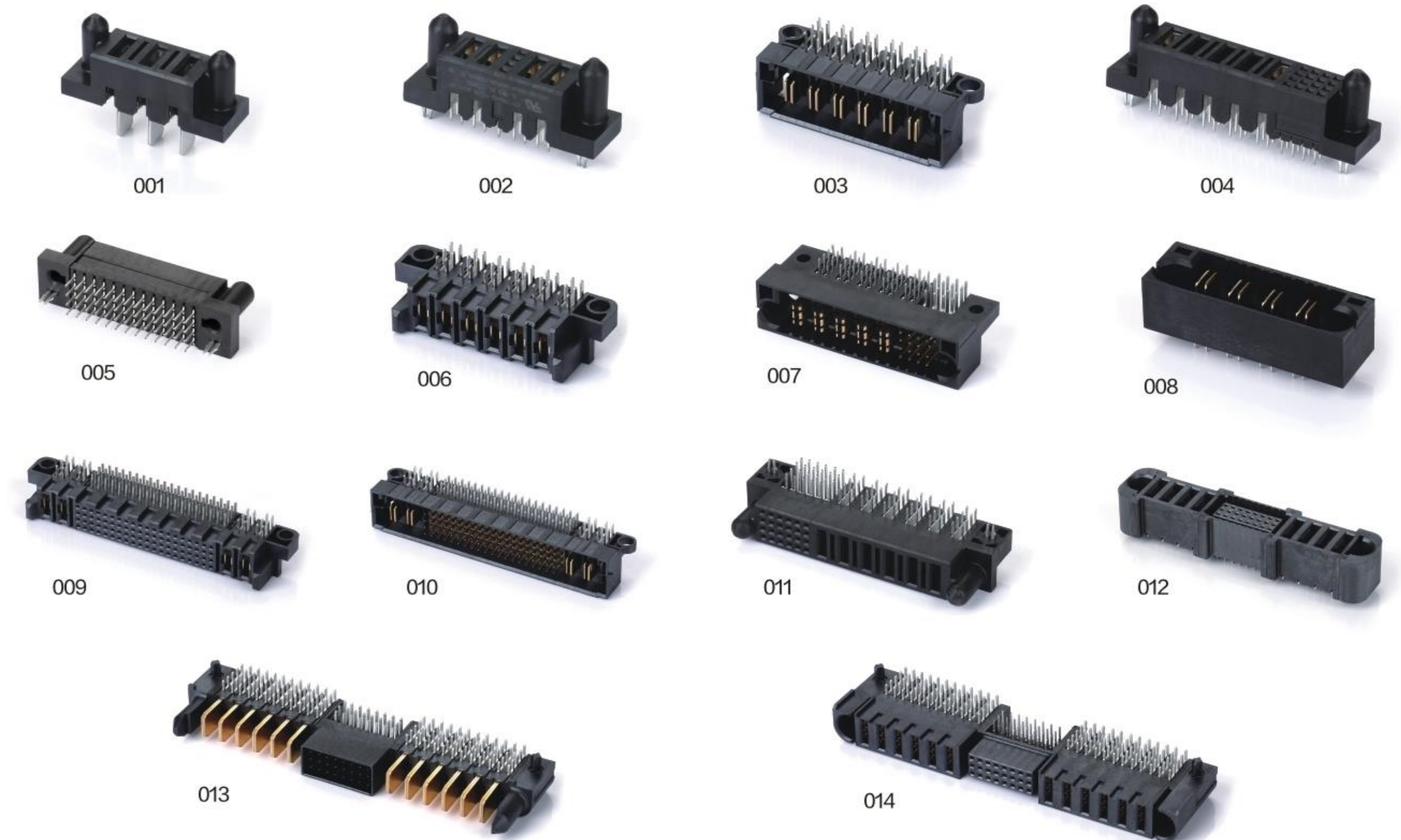


2.0MM 间距 公座
H:9.75 20PIN

0.5 / 1.0mm间距FPC系列



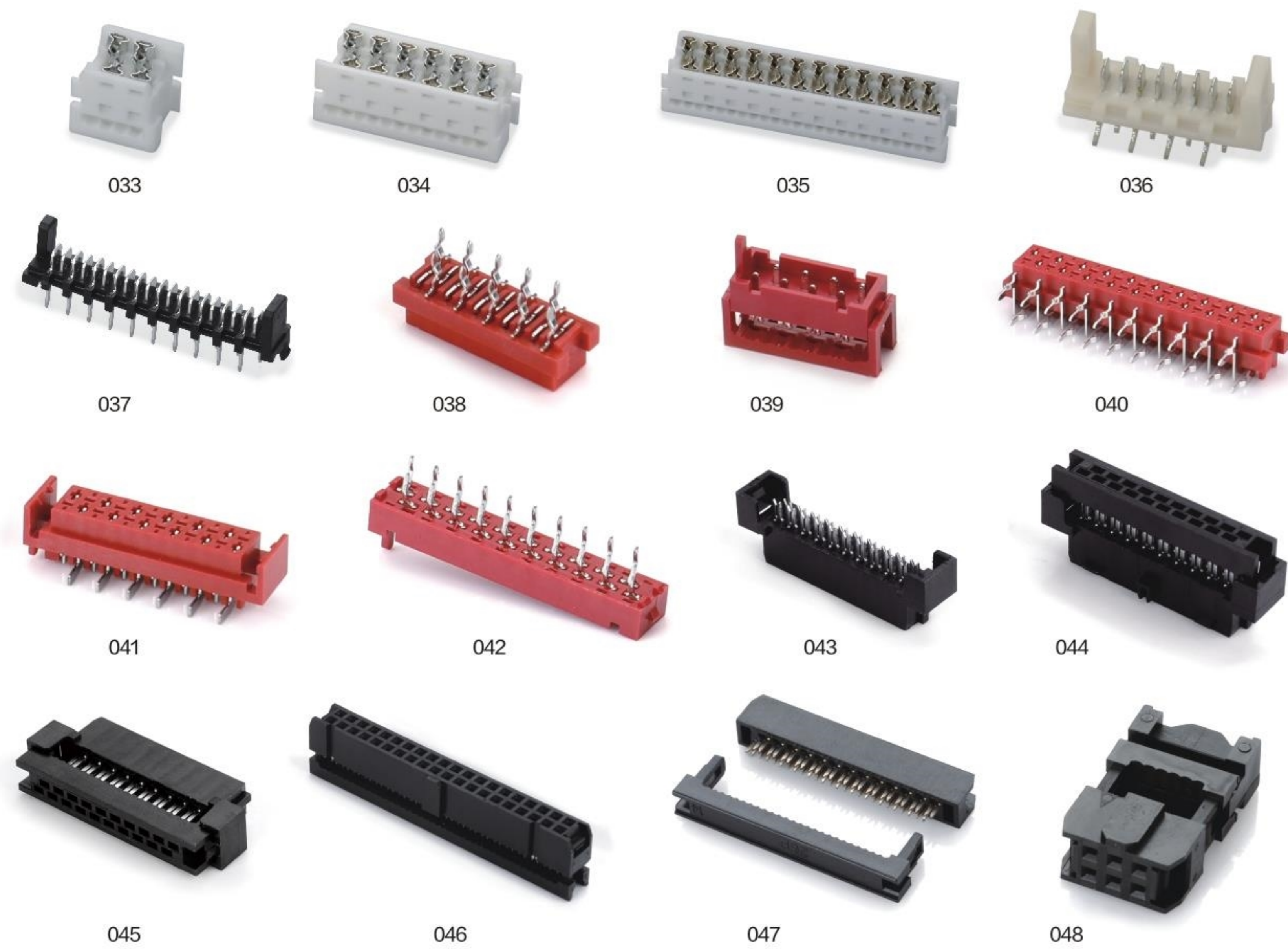
大电流连接器系列



电池座连接器系列



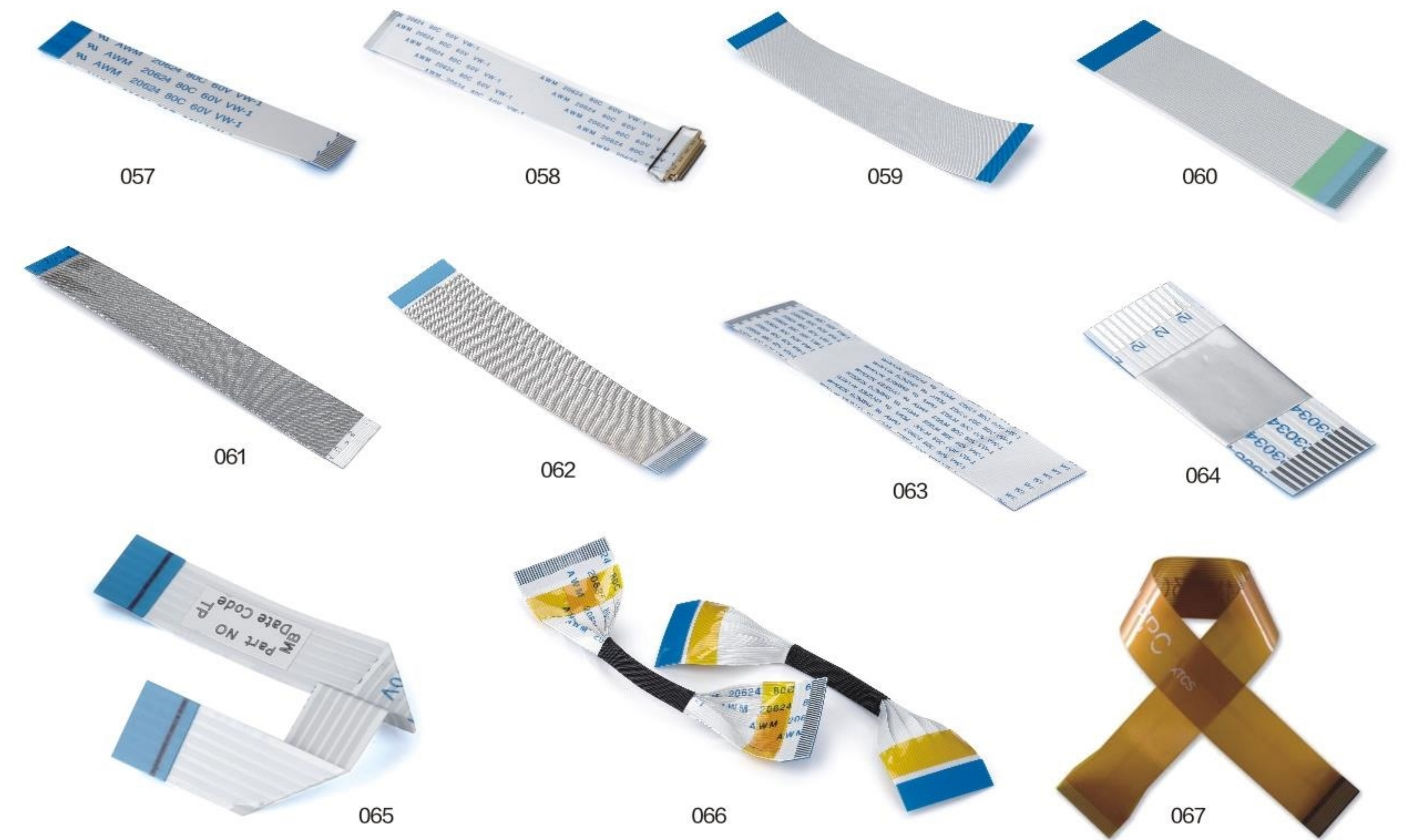
IDC / DIP Plug Connector



IDC Flat Cable



FFC / FPC线束系列

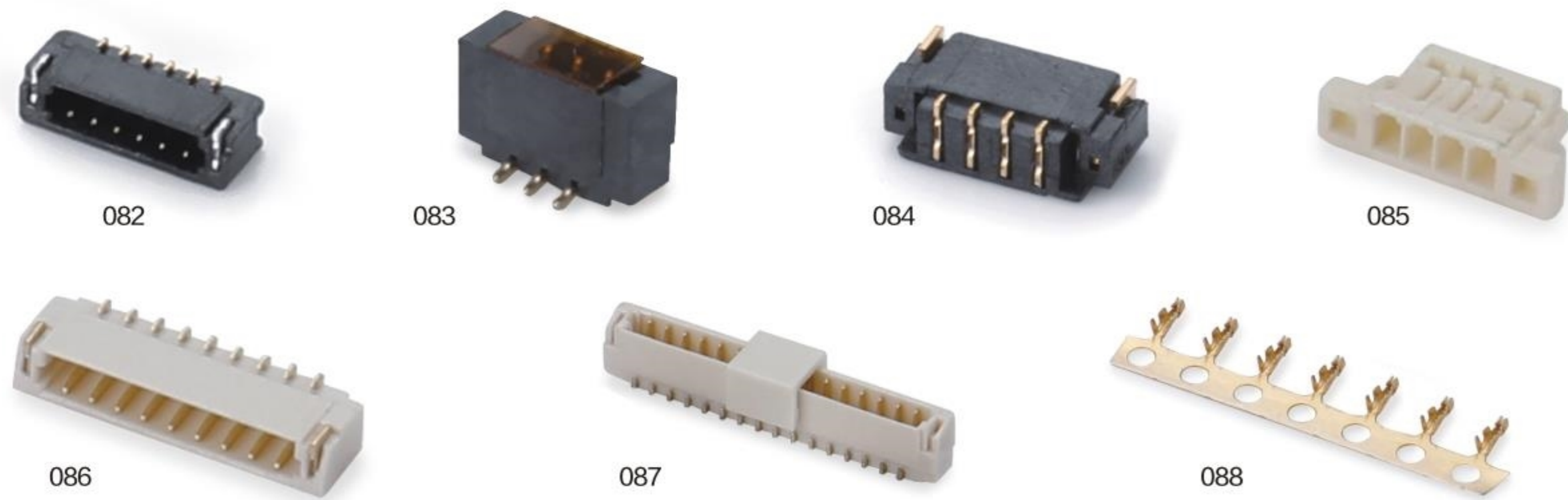


电子线束系列

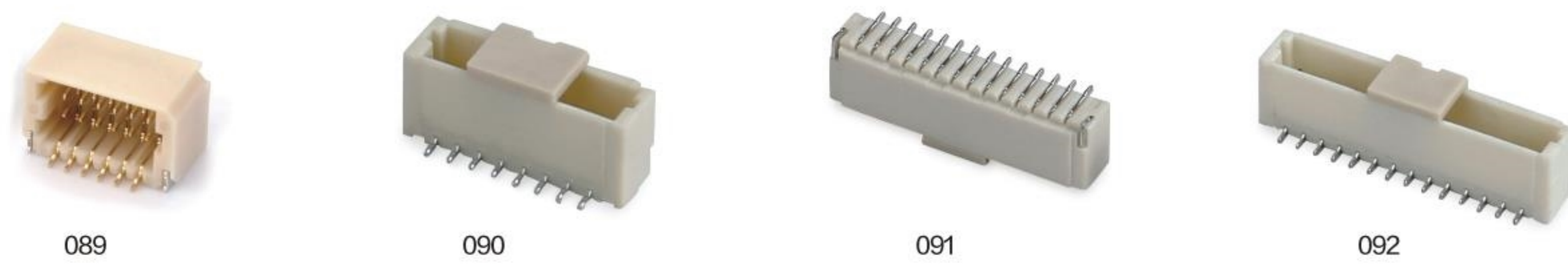


0.6 / 0.8 / 1.0 / 1.2 / 1.25 / 1.5 / 2.0

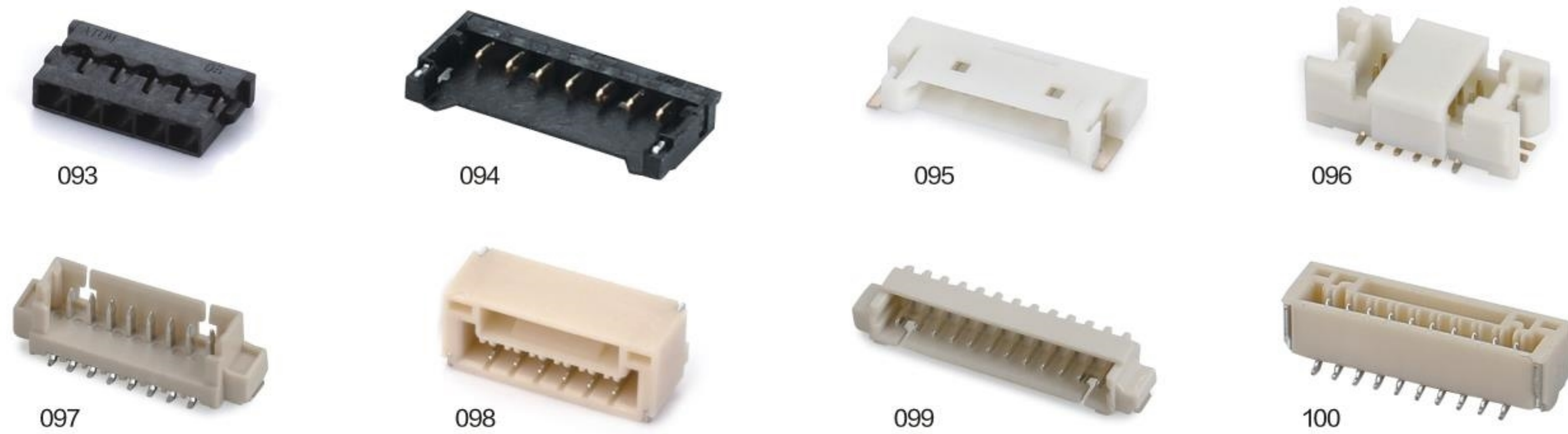
0.6 / 0.8mm Connector



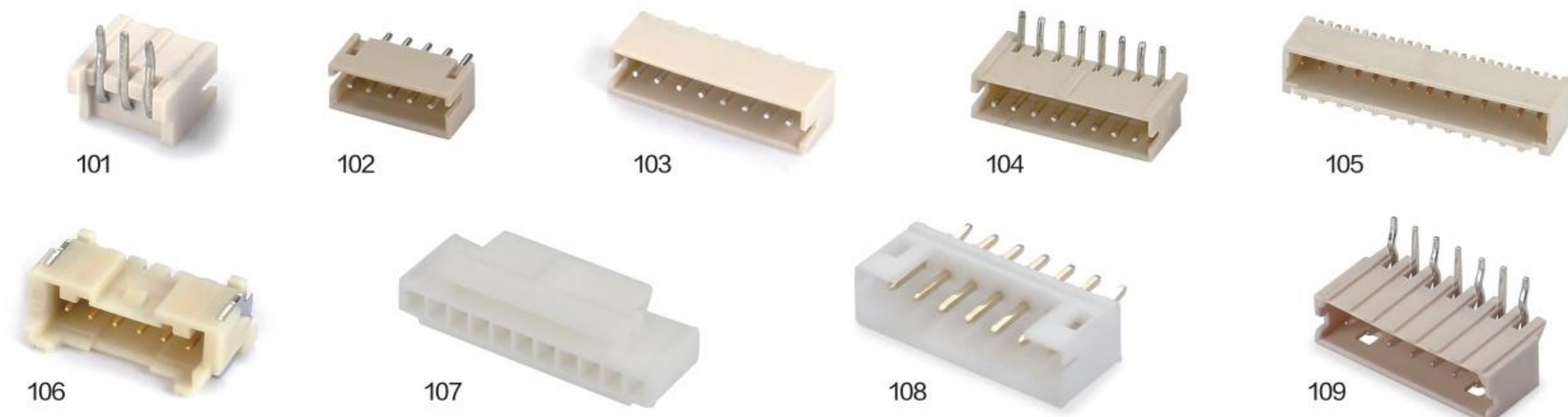
1.0mm Connector



1.2 / 1.25mm Connector



1.5 / 2.0 mm Connector

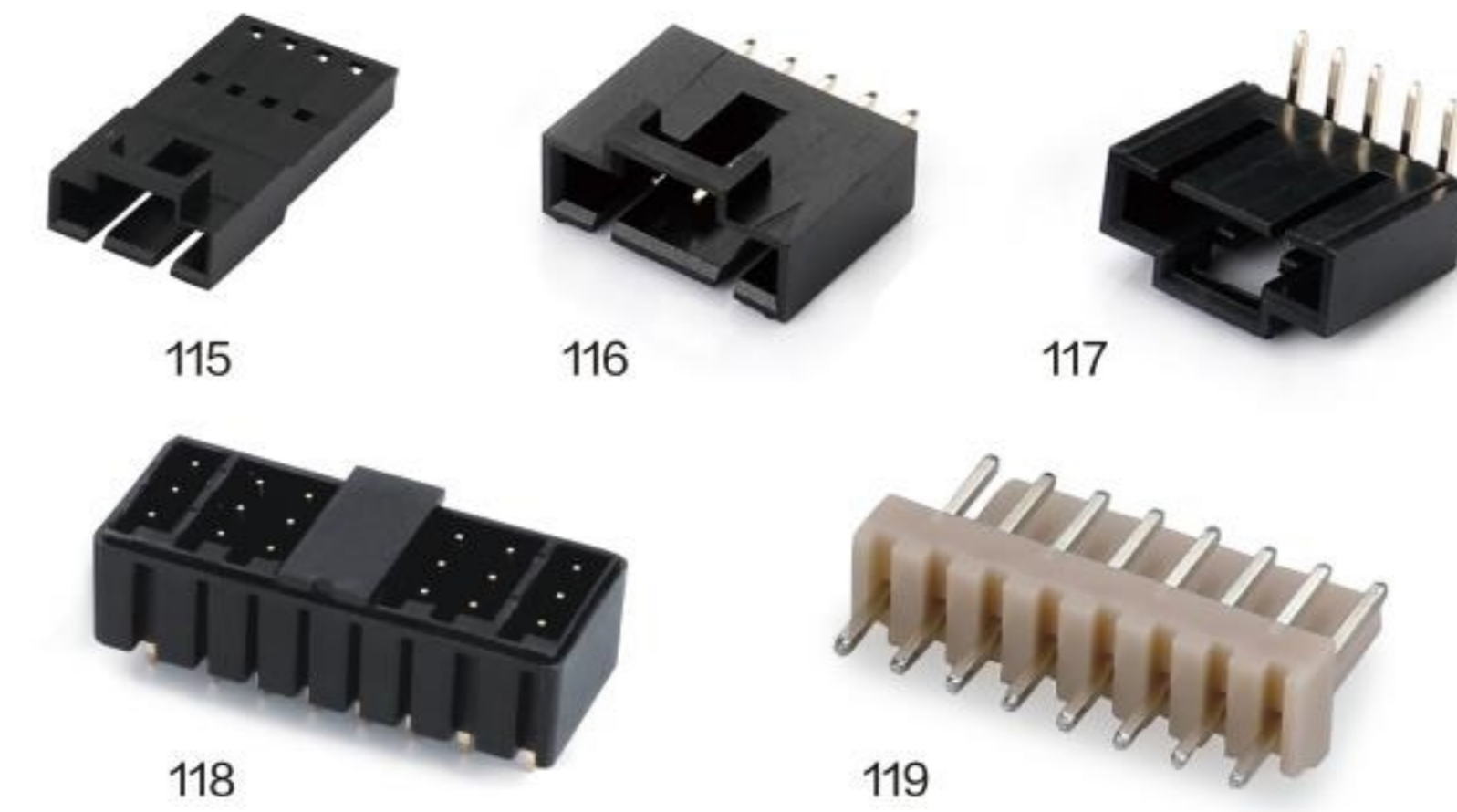


2.5 / 2.54 / 3.0 / 3.96 / 4.2 / 5.08

2.5mm Connector



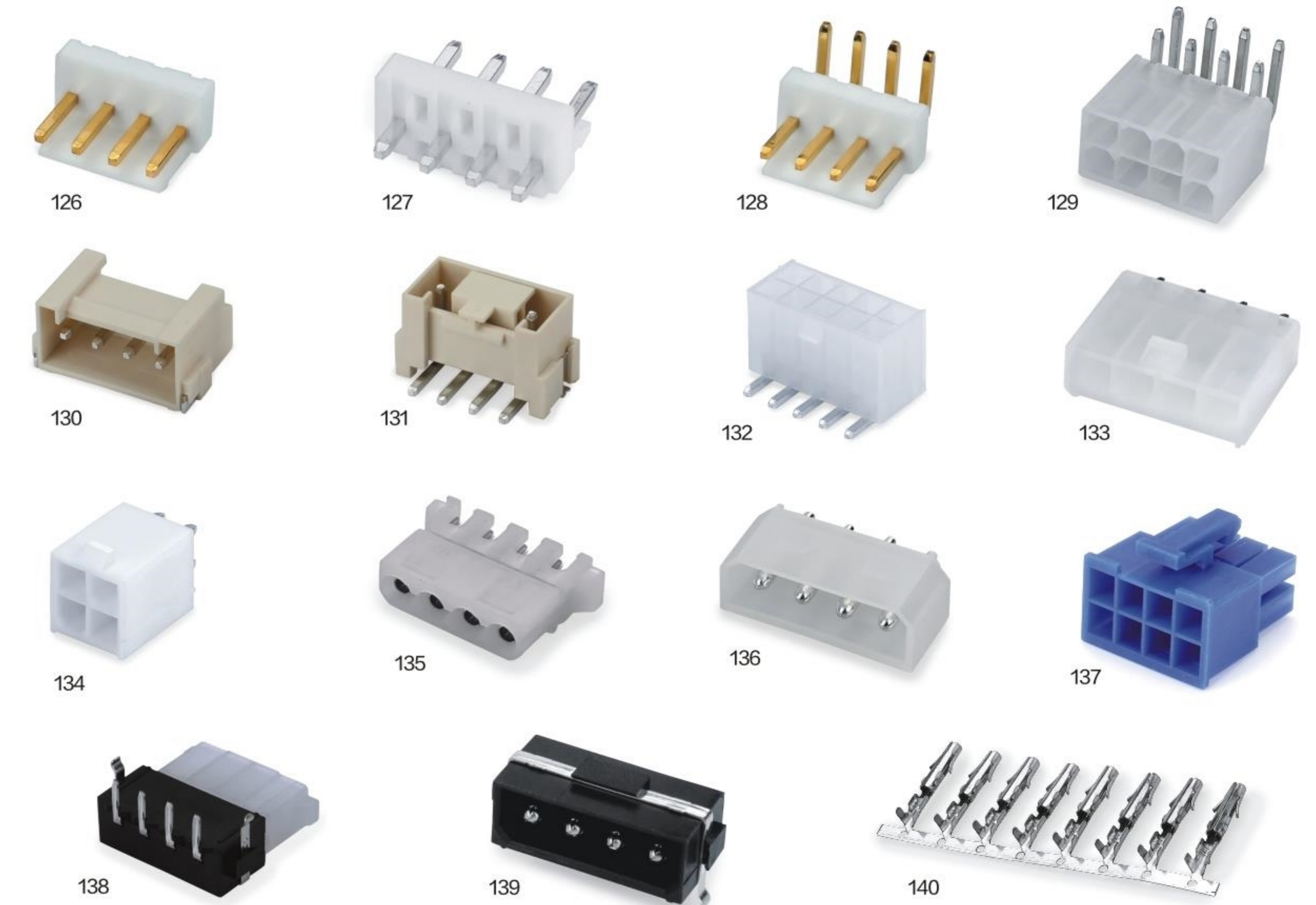
2.54mm Connector



3.0mm Connector



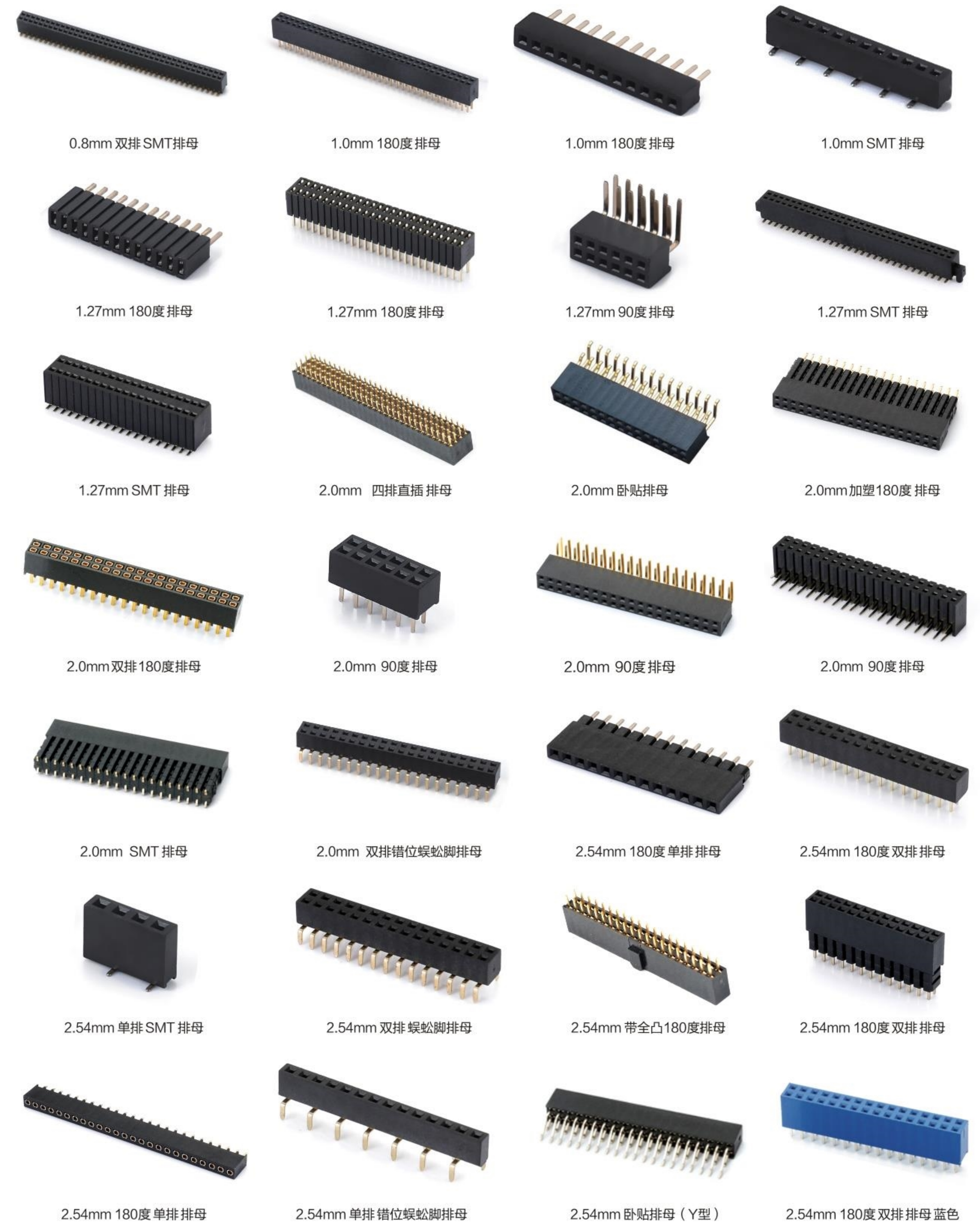
3.96 / 4.20 / 5.08mm Connector



0.8 / 1.0 / 1.27 / 2.0 / 2.54 / 3.96 / 4.2 / 5.08

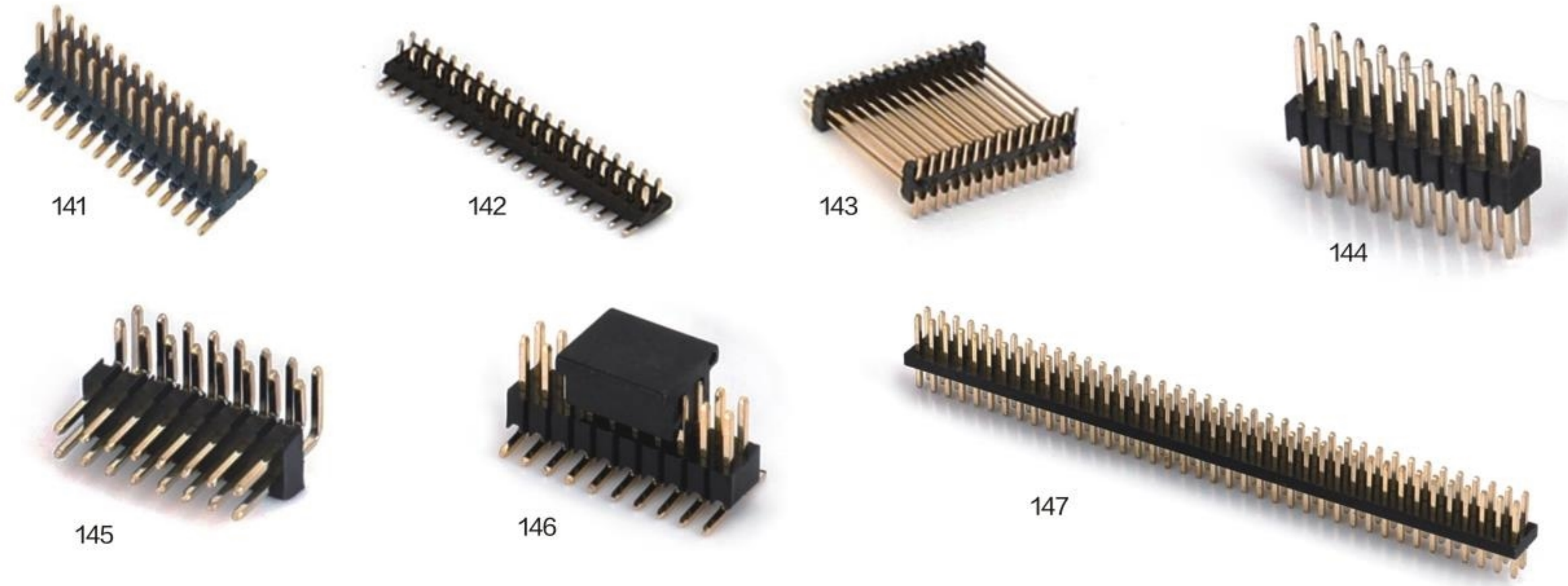


0.8 / 1.0 / 1.27 / 2.0 / 2.54

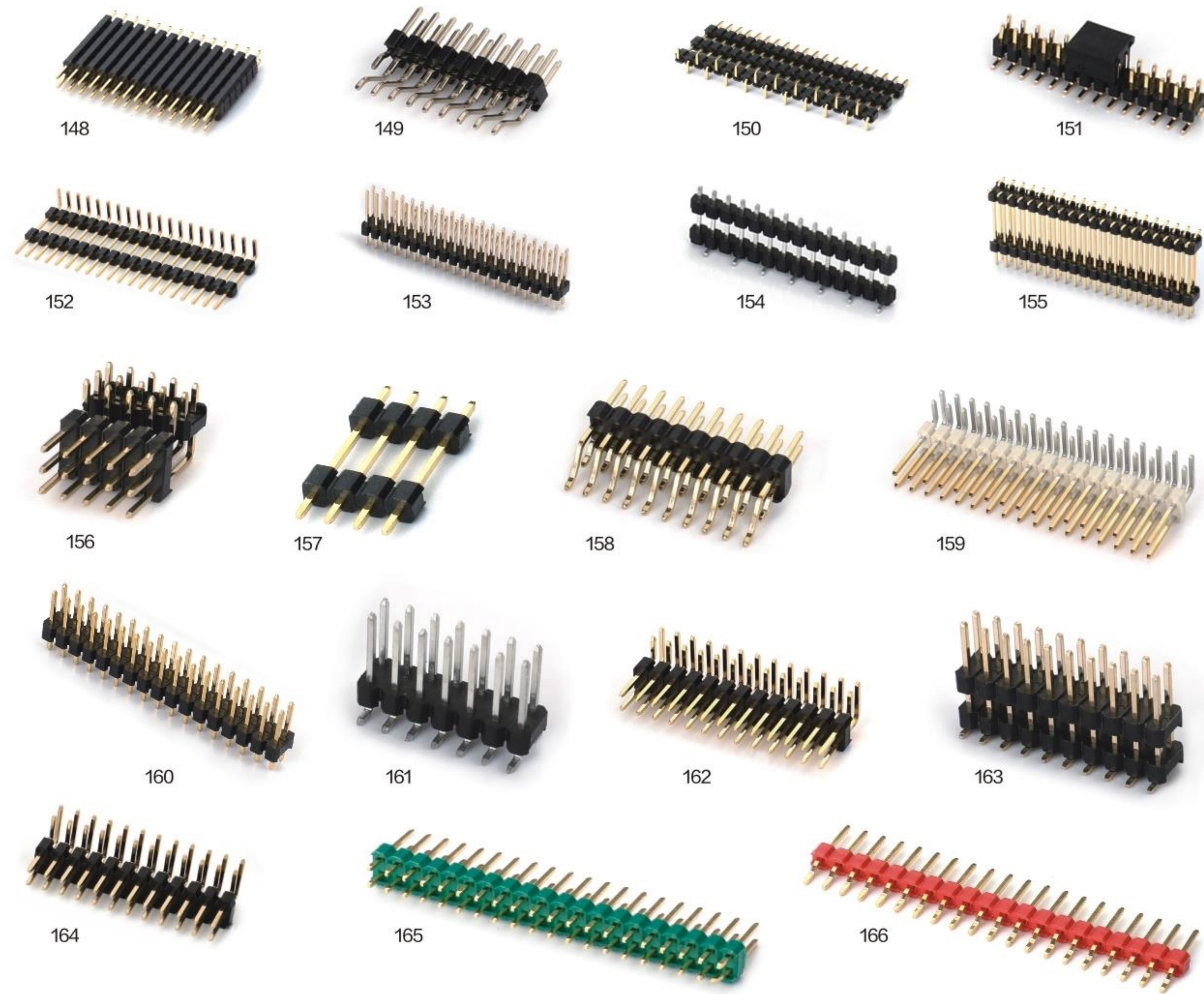


0.8 / 1.0 / 1.27 / 2.0 / 2.54

0.8 / 1.0 / 1.27 / 2.00 / 2.54 mm Connector

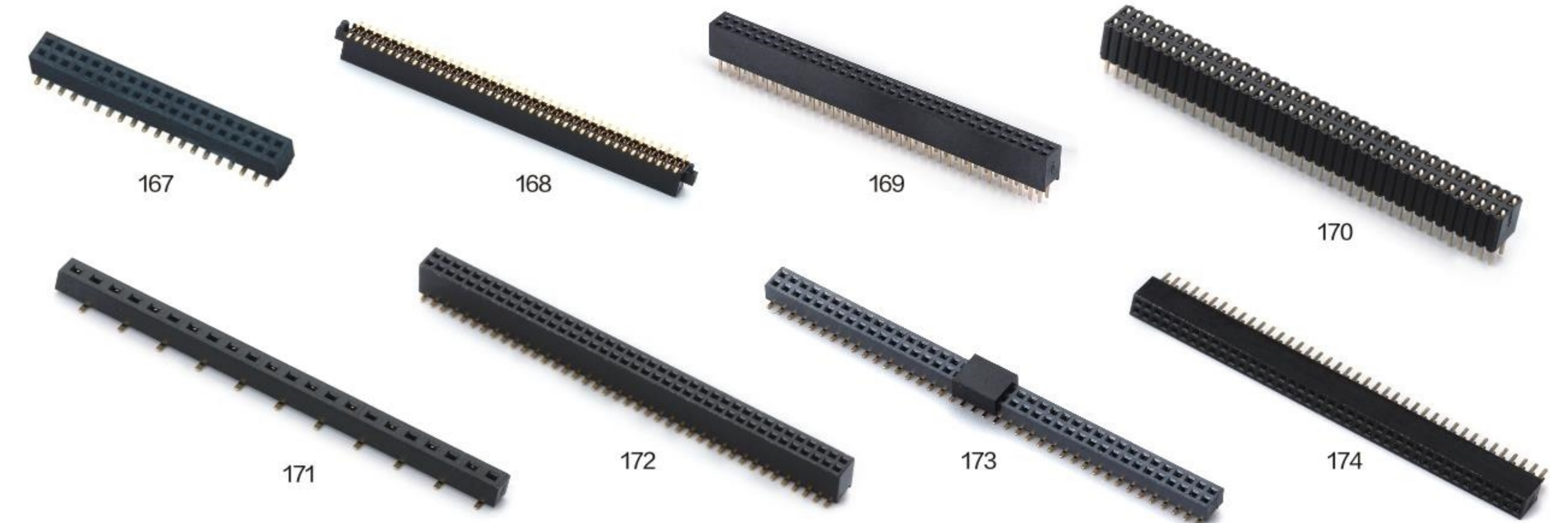


2.00 / 2.54mm Connector



0.8 / 1.0 / 1.27 / 2.0 / 2.54

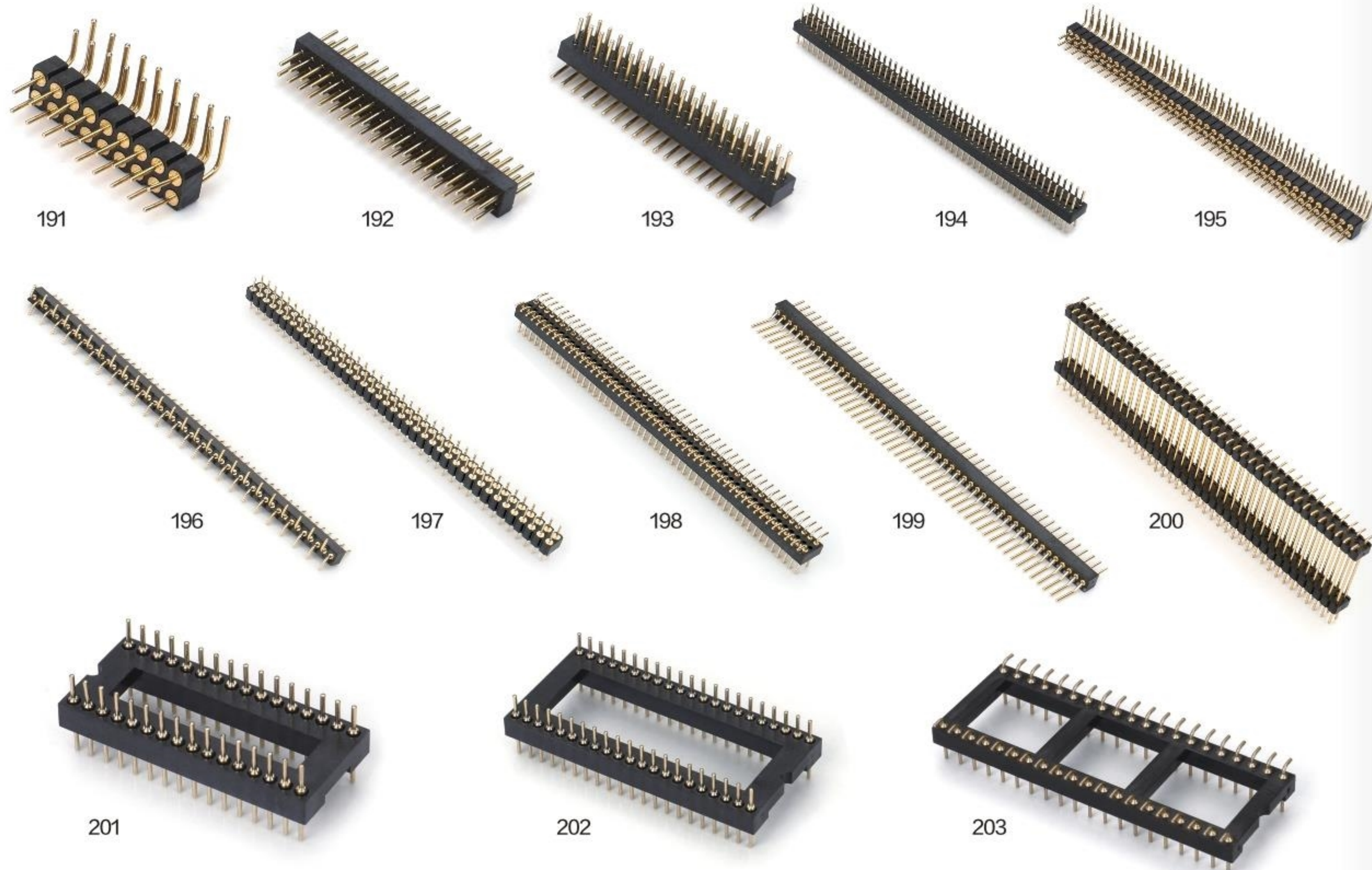
0.8 / 1.0 / 1.27mm Connector



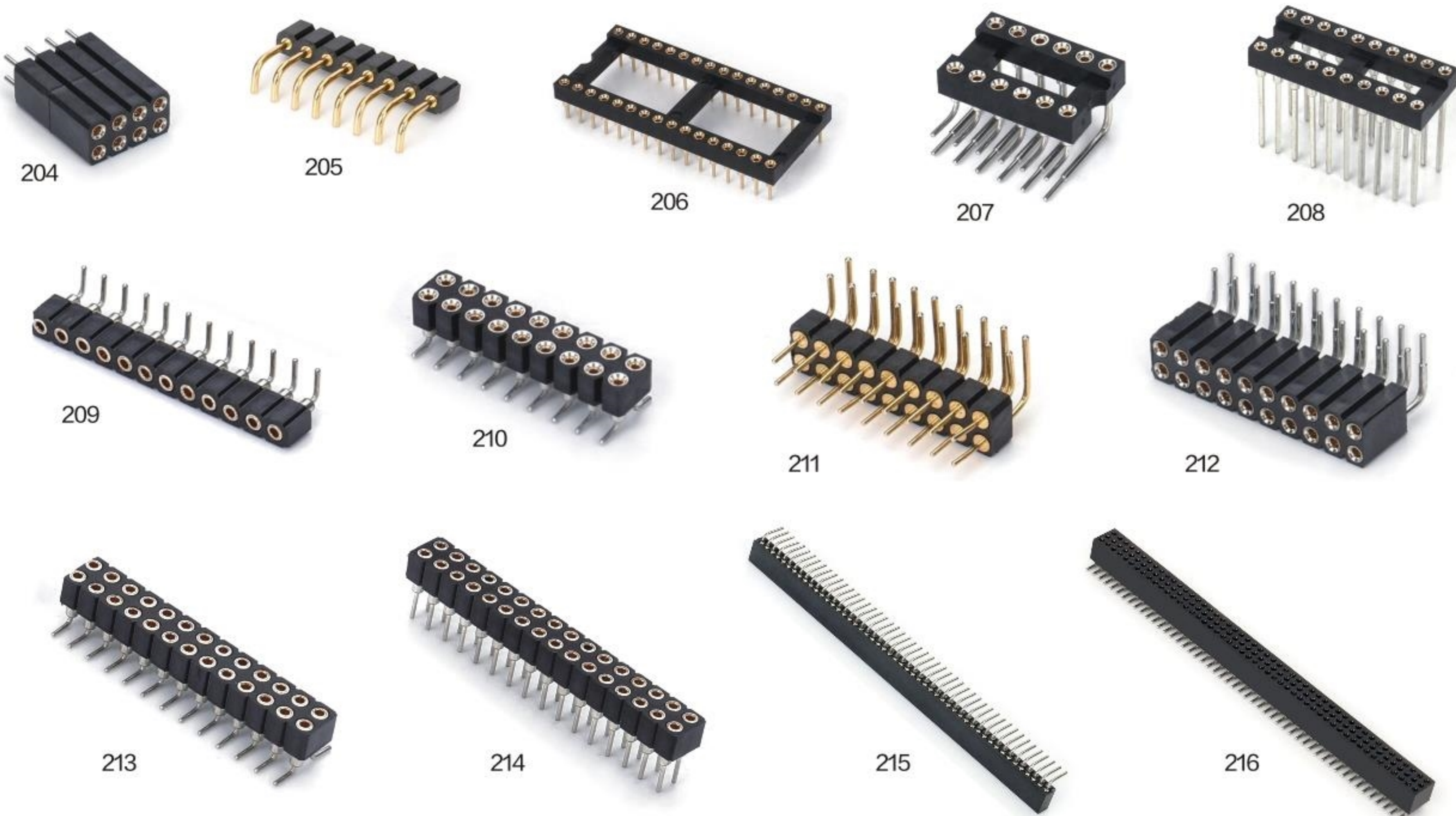
2.00 / 2.54mm Connector



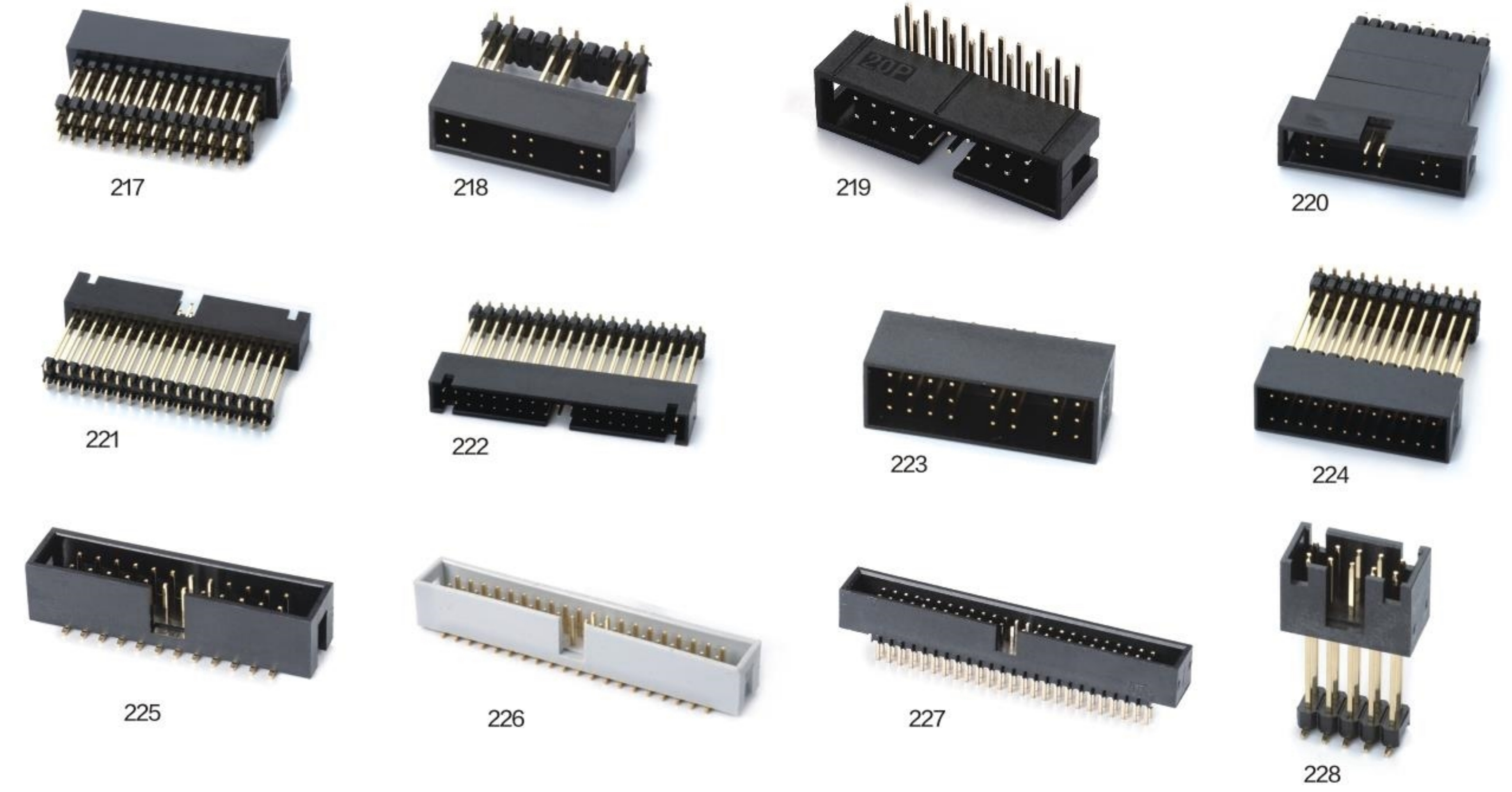
圆孔排针



圆孔排母



筒牛系列



牛角系列



TYPE-C 6 / 14 / 16 / 24P

TYPE-C 6P



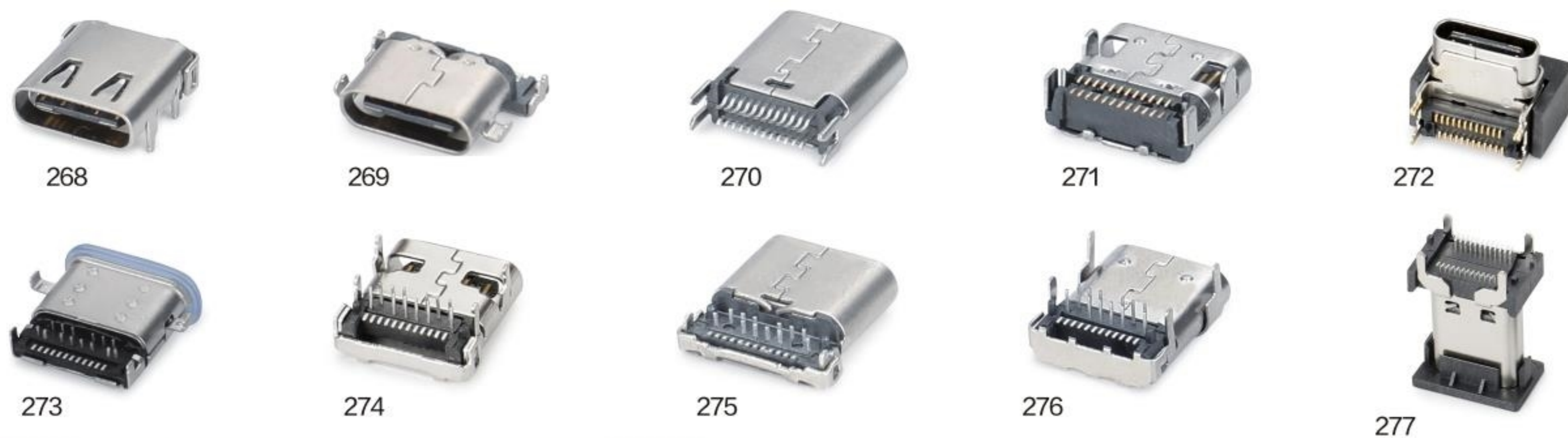
TYPE-C 14P



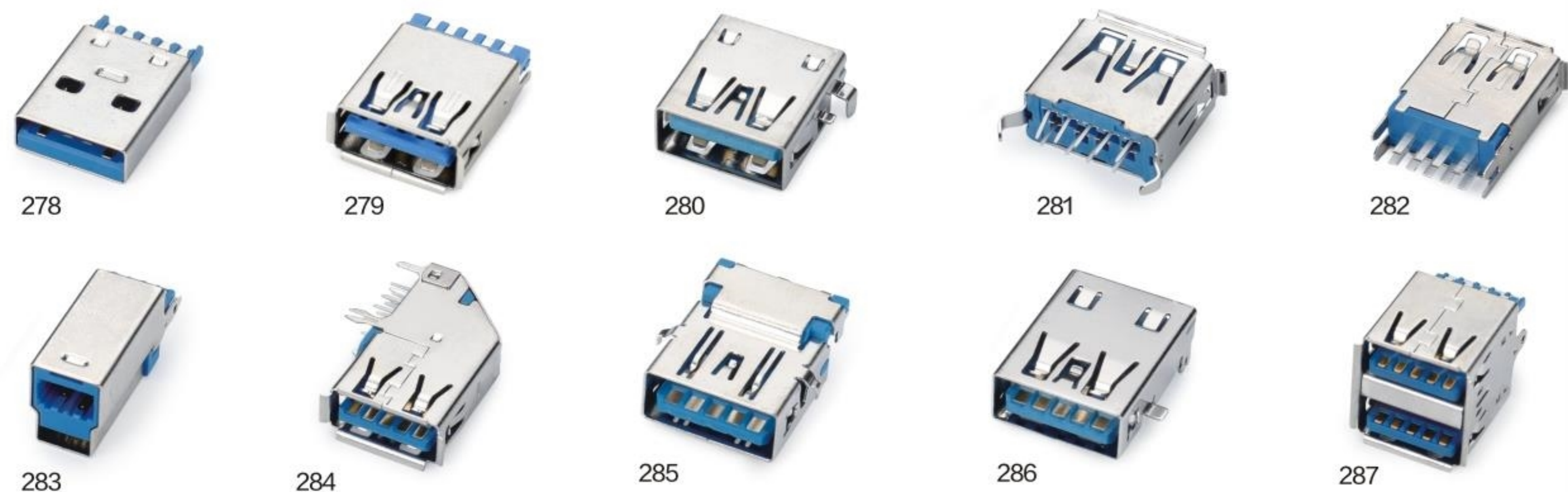
TYPE-C 16P



TYPE-C 24P



USB 3.0



SD Card / Micro SD / Micro SIM / SIM Card

SIM Card / SD Card



Micro SD / Micro SIM / Nano SIM



D-SUB HDR / DR / 大电流 / 双层 / HDR 高架 / 防水系列

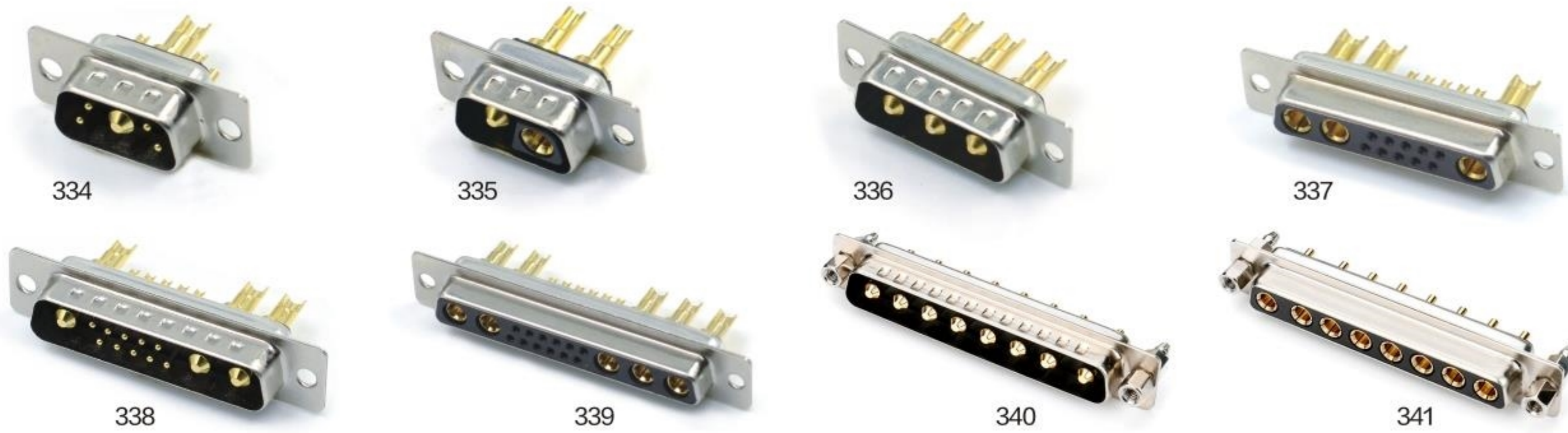
D-SUB HDR



D-SUB DR



D-SUB 大电流系列



D-SUB 双层系列 / HDR 高架



D-SUB 防水系列



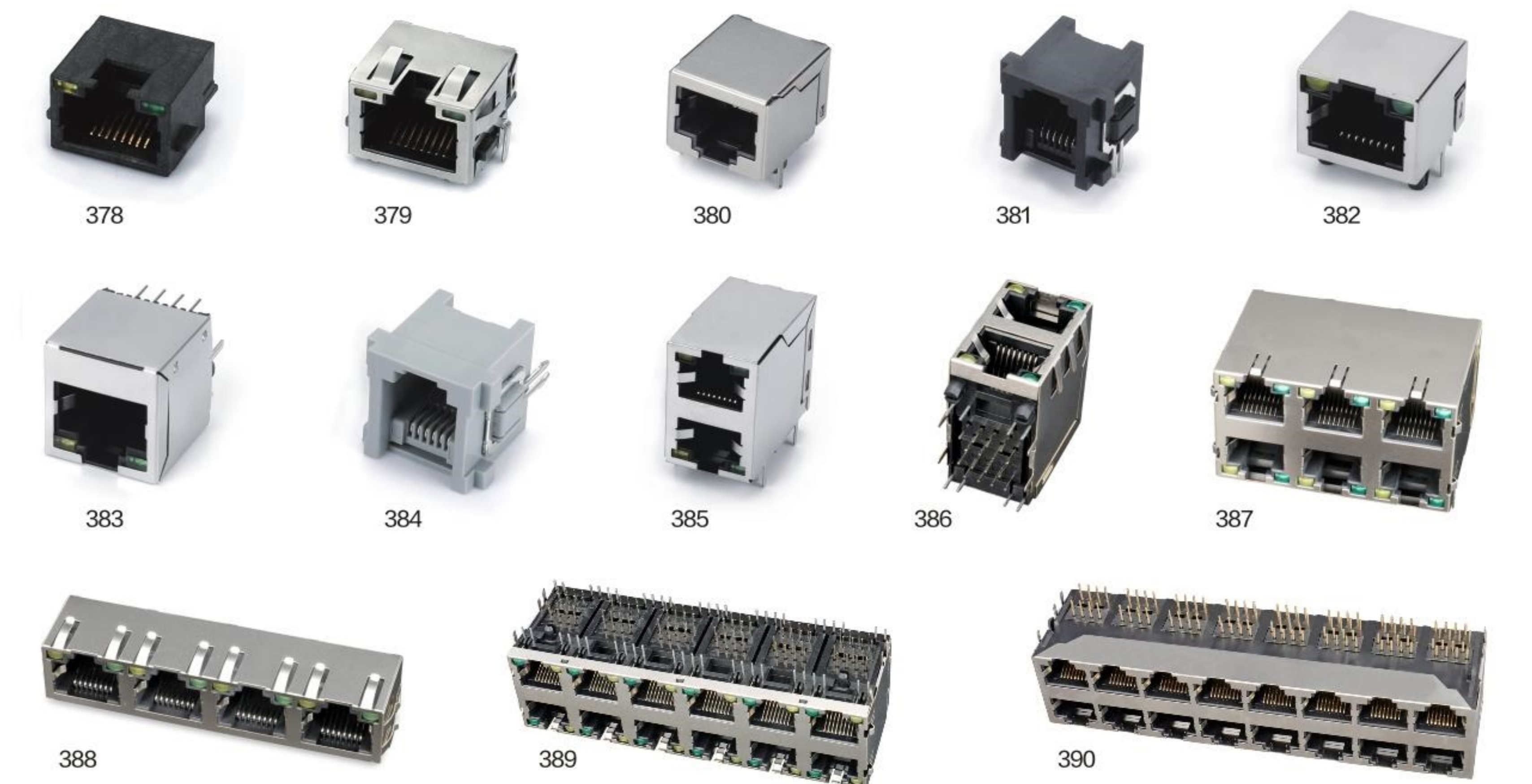
DB-HDB / DIDC



HDMI系列



RJ45系列



POGOPIN系列



欧式插座系列



RF系列



